

# Local Information and Resources Guide



2026  
**CORSAIR**  
NATIONALS



CORSAIR  
*m*  
MARINE  
INTERNATIONAL



1. GETTING TO ENCINAL YACHT CLUB (EYC)
2. DOCK SPACE AND SLIPS
3. TRAILERS, LAUNCHING, AND HAUL-OUT
4. LODGING NEAR EYC
5. FOOD, PROVISIONS, AND "AFTER-SAIL"
6. MARINE SERVICES AND PARTS
7. THINGS TO DO IN ALAMEDA (FOR CREWS AND FAMILIES)

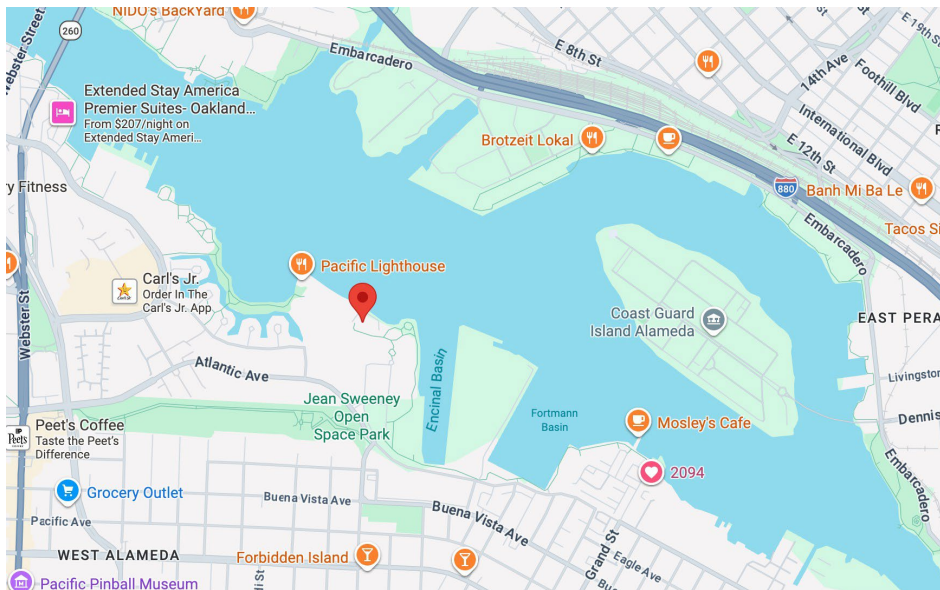
## 1. Getting to Encinal Yacht Club (EYC)

Encinal Yacht Club

1101 Pacific Marina

Alameda, CA 94501

**Directions and map:**



<https://www.encinal.org/information/directions>

Parking is available in the club lot directly in front of the building; please observe any event or member-only signage.

## 2. Dock Space and Slips

EYC has granted exclusive use of the EYC docks for the Nationals weekend, but total space is limited.

Priority for EYC dock assignments will be:

1. *Out-of-state boats.*
2. *SoCal and other long-distance Bay Area visitors.*
3. *Remaining boats on a first-come, first-served basis.*

We expect room to raft approximately 10–15 F-boats on the EYC docks, depending on boat size and conditions.

To request dock space at EYC, please contact:

- EYC Port Captain Ryan Scheff: [portcaptain@encinal.org](mailto:portcaptain@encinal.org)
- When you contact Ryan, please provide: boat name, sail number, LOA, beam, draft, arrival and departure dates, and whether you can accept rafting.

### **Nearby marinas and yacht clubs**

If space at EYC is full, or if you prefer a slip elsewhere, the following marinas are nearby:

- ***Safe Harbor Marina Village*** – 1030 Marina Village Pkwy, Alameda, CA: short motor from EYC in protected water; preferred option for close access and easy currents. Contact them at (510) 521-0905. Use DockSpot at [www.dockspot.com](http://www.dockspot.com) to make slip reservations. They will require proof of insurance and your boats CA registration or Coast Guard documentation so have those handy when you contact them or use the Dockspot website.
- ***Safe Harbor Ballena Isle*** – 1150 Ballena Blvd, Alameda, CA 94501: more end-ties and direct access to the South Bay; can see 2–3 ft chop and strong afternoon breeze near the entrance. Contact Octavia Riggs or Connie Jardon at [ballenaisle@shmarinas.com](mailto:ballenaisle@shmarinas.com) or (510) 523-5528. Use DockSpot at [www.dockspot.com](http://www.dockspot.com) to make slip reservations. They will require proof of insurance and your boats CA registration or Coast Guard documentation so have those handy when you contact them or use the Dockspot website.
- ***Oakland Yacht Club*** (Pacific Marina) – 1101 Pacific Marina, Alameda, CA 94501: immediately adjacent to EYC; guest slips often available, and PICYA discounts may apply for member clubs.

### 3. Trailers, Launching, and Haul-out

#### On-site parking and trailers

- EYC parking lot: plenty of car parking for competitors and guests.
- EYC cannot store trailers on site.

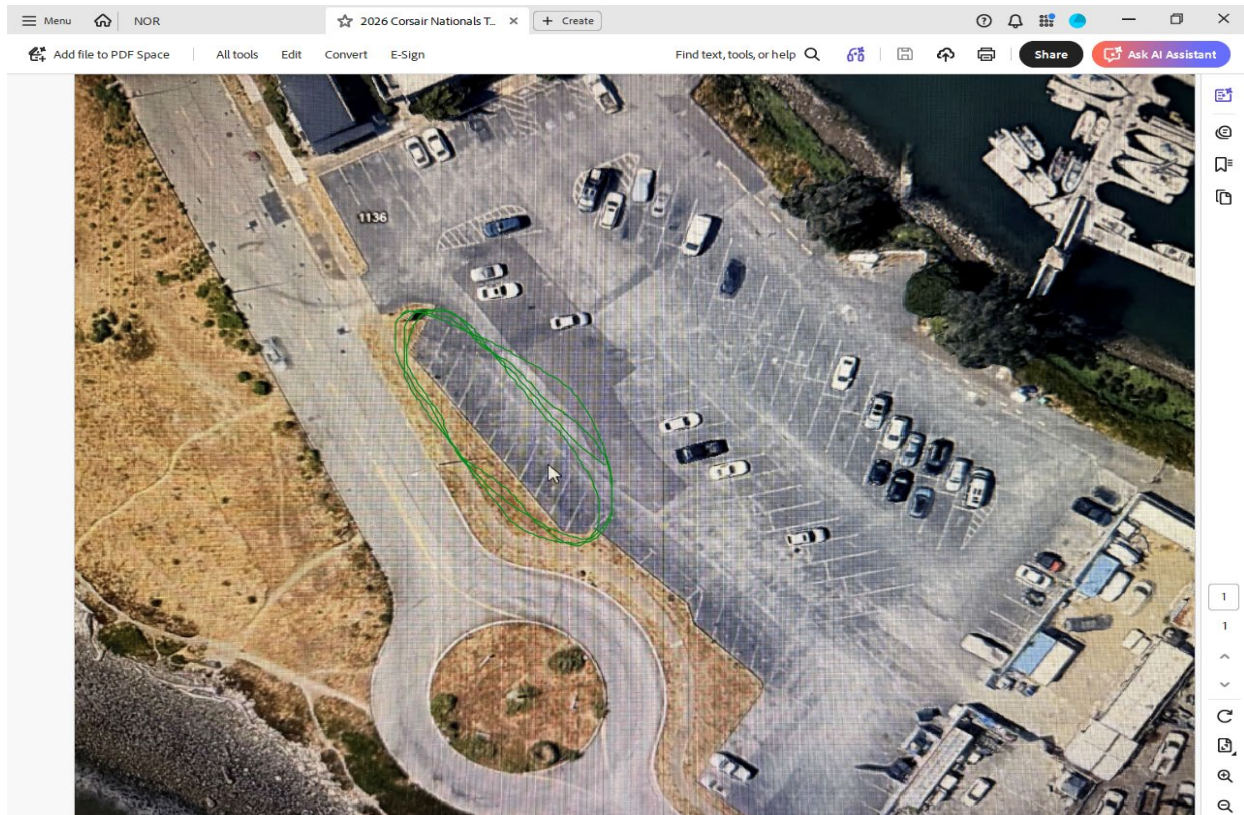
#### Short-term trailer storage (event week)

Short-term trailer storage for the event has been arranged at a cost of \$25/day:

- Ballena Isle Marina

1150 Ballena Blvd, Alameda, CA 94501

The parking spots circled in Green in the photo below have been reserved for the Nationals, but please check in with the marina office upon arrival and give them your trailer license plate number so they can note that in their records.



## **Where to launch a Corsair**

For trailerable multihulls coming from out of the area, these launch ramps below are the most useful. The Alameda ramps are the closest when driving from Southern CA; If you are coming from north of the Bay area the Berkeley and Richmond ramps will avoid traffic on Rts 80 and 880 but will be farther away from Alameda and require sailing your boat through the Bay to Alameda.

### **- Encinal Launch Ramp (Alameda)**

Address: 190 Central Avenue, Alameda, CA 94501

Closest launch ramp to trailer parking at Ballena Isle Marina. A good amount of trailer parking but weekends can be very crowded, as there are paddleboard and kayak rentals in the park where the ramp is located. Can be windy in the afternoon but there is a seawall that protects the ramp launch area. No overnight parking. Currently the main road to this ramp is blocked for construction, requiring driving to the North end of Alameda by the old Air Force Base. See detailed driving instructions at the end of this info package.

### **- Grand Street Launching Facility (Alameda)**

2094 Grand Street, Alameda, CA 94501 – FREE launch and parking.

Closest public ramp to EYC on the Oakland Estuary. Very limited trailer parking; weekends can be difficult unless you arrive very early or late. A restroom is present, but usually in poor condition.

### **- Richmond Marina Bay Yacht Harbor (Richmond)**

1340 Marina Way South, Richmond, CA 94804 – paid launch/parking.

Excellent ramp with wide lanes, long dock fingers, and generally reliable parking, even on busy weekends.

Well-protected water behind a breakwater and Brooks Island, but typical approach is downwind in summer afternoon breeze, so good reverse is important.

Follow channel markers carefully; shallow water (<2 ft) outside dredged channels.

### **- Berkeley Marina (Berkeley)**

1-1/2 Spinnaker Way, Berkeley, CA 94710 – paid launch/parking.

The ramp itself works, but parking is very constrained, and overhanging trees on the approach make mast-up access problematic.

Suitable on weekdays; not recommended for sailboats on summer weekends.

We recommend that most visiting Corsair teams either:

- Launch at Encinal Launch Ramp or Grand Street mid-week or off-peak and move the boat by

water to EYC, leaving the trailer at Ballena Isle Marina, or

- Launch at Richmond Marina Bay if arriving on a busy summer weekend, then deliver the boat to EYC by water.

#### **4. Lodging Near EYC**

Alameda has a good range of hotels within a short drive of EYC.

Options include:

- Hampton Inn & Suites – 1700 Harbor Bay Pkwy, (510) 521-4500
- Hawthorn Suites – 1628 Webster St, (510) 522-1000
- Extended Stay America – 1350 Marina Village Pkwy, (510) 864-1333
- Extended Stay America – 1260 S Loop Rd, (510) 769-7000
- Coral Reef Inn & Suites – 400 Park St, (510) 521-2330
- Rodeway Inn – 1925 Webster St, (510) 521-8400
- Marina Village Inn – 1151 Pacific Marina, (510) 523-9450

These range from extended-stay, kitchenette setups (ideal for teams) to more traditional hotel rooms, all within a short drive of the club.

For vacation rentals and group houses, there are also many short-term rental options on the island; book early if your dates overlap with major Alameda events.

#### **5. Food, Provisions, and “After-Sail” (Note there are events planned for July 17 and 18 in the evening)**

##### **Groceries and essentials**

- Full-service Safeway approximately 1 mile from EYC (Alameda South Shore Center area) for provisioning.
- Additional options, coffee, and casual food are concentrated around South Shore Center, Downtown Alameda (Park Street), Webster Street, and Alameda Landing.

##### **Restaurants and going out**

Key nearby areas:

- Downtown Alameda (Park Street) – dense selection of restaurants and bars, plus the historic

Alameda Theatre.

- Webster Street – closer to the West End, with casual dining and nightlife.
- South Shore Center – waterfront-adjacent shopping center with multiple food options and easy parking.
- Spirits Alley (Alameda Point) – Rock Wall Wine Company, Faction Brewing, St. George Spirits, and others clustered along Monarch Street with big San Francisco views; great for an evening outing.

## 6. Marine Services and Parts

If you need parts, repairs, or a yard during the event, the following are nearby:

- **Llewellyn's Marine Supply** (formerly Svendsen's)

2900 Main St, #1900, Alameda, CA 94501 – (510) 522-2886

Full chandlery close to Alameda marinas; open Monday–Friday, 8 am–5 pm.

- **West Marine** (Alameda)

2230 S Shore Center, Alameda, CA 94501 – (510) 671-3080

General marine parts and consumables; open Mon–Sat 9 am–6 pm, Sun 9 am–5 pm.

- **Svendsen's Bay Marina** (Richmond): Ask for Chris Evanoff if you have Metal Shop repairs, he has experience with Corsairs and has crewed on them in the past.

310 W Cutting Blvd, Richmond, CA 94804 – (510) 237-0140

Full-service yard for larger repairs and haul-outs; open Mon–Fri 7:30 am–5 pm, Sat 8 am–2 pm.

We suggest contacting yards and service providers as early as possible if you anticipate needing work during Nationals week.

## 7. Things to Do in Alameda (For Crews and Families)

Alameda is an easy place for non-sailors to explore while the racing is underway. Highlights:

- USS Hornet Museum – historic aircraft carrier with exhibits and bay views.
- Crown Memorial State Beach and Crab Cove Visitor Center – sandy beach, shallow water, and a great walking path.
- Downtown Alameda (Park Street) – shops, historic theater, and multiple dining options.

- Spirits Alley and Alameda Point – tasting rooms and breweries with views of San Francisco; also the starting point for the Alameda Point self-guided tour.

Additional visitor information, including tours, festivals, and maps, is available at:

[www.alamedaca.gov/visitors](http://www.alamedaca.gov/visitors)