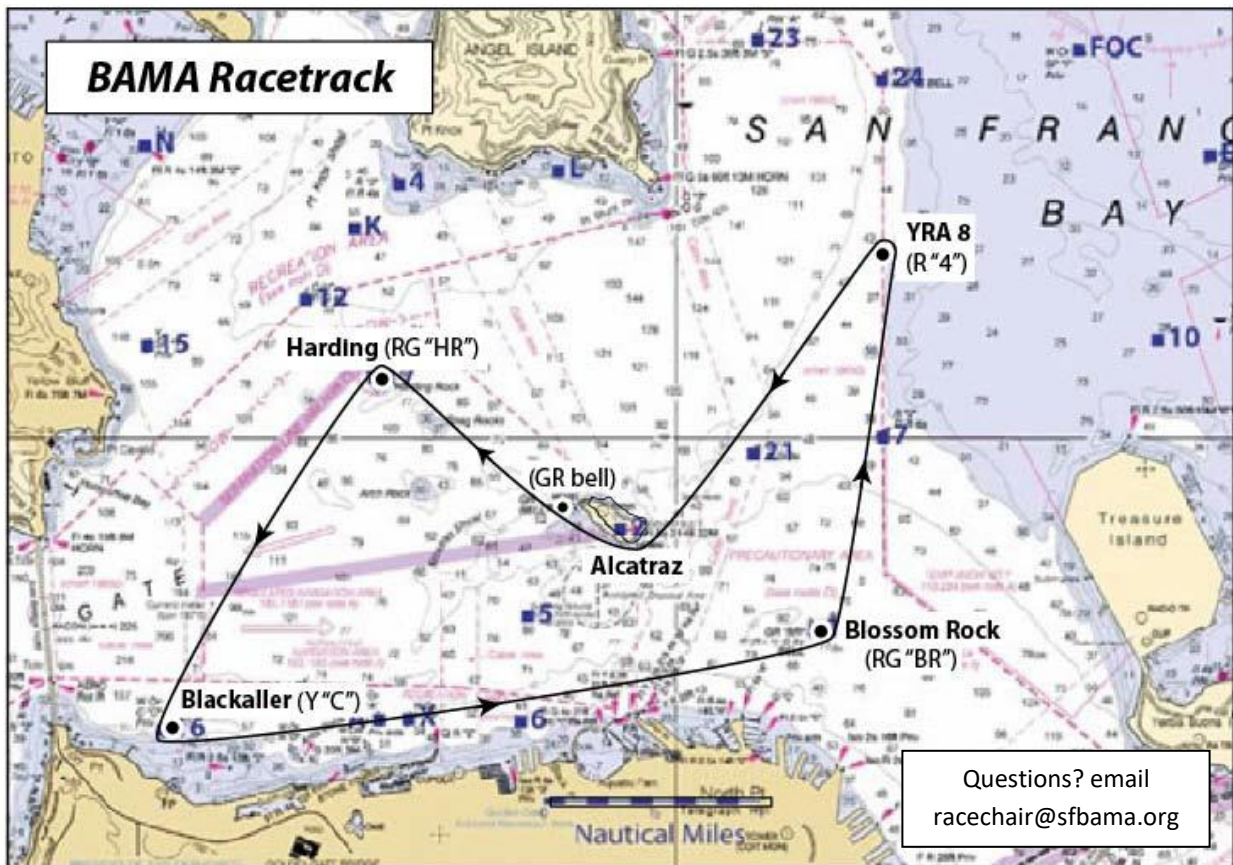


# The 2022 BAMA Racetrack Regatta

The BAMA Racetrack is open for 2022. The BAMA Racetrack is a fixed 10-nm course to be sailed any time and as many times as one wants. It is a free event for BAMA Members, and only open to BAMA members. The winner, on corrected time, shall be noted annually on the BAMA RACETRACK PERPETUAL TROPHY.



## 1. RULES

**1.1** The regatta will be governed by the rules as defined in COLREGS and *The Racing Rules of Sailing, 2021-2024 (RRS)*. It is likely that COLREGS will be the most applicable rules since it is unlikely that two racers will be on the course at the same time. If there are two racers or more, then the RRS applies.

## 2. ELIGIBILITY AND ENTRY

**2.1** The regatta is open to all multihulls with a current 2022 PHRF certificate issued by BAMA.

### 3. SCHEDULE

3.1 Registration occurs after the participant submits their boat's time *and GPS track* to BAMA for Scoring.

3.2 Dates of racing are **any** date between January 15, 2022 to October 30, 2022

3.3 The winner of the BAMA Racetrack Perpetual Trophy, and the bestowing of any other Racetrack Awards, shall take place at the 2022 BAMA Annual Meeting

### 4. SAILING INSTRUCTIONS

4.1 Racing Area and course as indicated in the BAMA Racetrack diagram

4.2 Boats shall sail the course in the direction indicated on the diagram

4.3 Marks are as follows:

a. Leave YRA 8 (Red "4") to Port

b. Leave Alcatraz Island to Starboard. (Note that the area between Little Alcatraz Rock (GR "bell") and Alcatraz Island is a Restricted Area).

c. Leave Harding (Red over Green "HR") to Port

d. Leave Blackaller (Yellow "C") to Port

e. Leave Blossom Rock (Red over Green "BR") to Port. (Note that H beam near St Francis Yacht Club must be left to the South).

4.4 Boats may use any Mark but Alcatraz for their start/finish, leaving it to Port. A boat's start and finish time occurs when the boat is first within 10 feet of the start/finish mark. Thus, a boat must pass within 10 feet of the start/finish mark to successfully start and finish.

4.5 Boat shall record the elapsed time between starting and finishing, and record a GPS track that covers the same time period which shall be sent to BAMA, along with elapsed time, for scoring.

### 5. OBSTRUCTIONS AND RESTRICTED AREAS

Obstructions and Restricted Areas are the ones posted in applicable charts. Ones that may come into effect are: 1) The area between Little Alcatraz Rock (GR "bell") and Alcatraz Island is a Restricted Area. 2) South of H Beam near St. Francis Yacht Club is a restricted area. 3) Area between San Francisco and South Tower of Golden Gate Bridge is a restricted area (not on the course unless the current drags you out).

### 6. SCORING

6.1. Time on Time handicapping will be used to calculate corrected times.

6.2 You may race this course as often as you wish during the allowed dates. Only the fastest corrected time that you submit will count.

6.3 Send your elapsed time(s) and GPS track(s) to [racechair@sfbama.org](mailto:racechair@sfbama.org).

6.4 NEW FOR 2022: The fastest corrected time will be awarded the BAMA RACETRACK PERPETUAL TROPHY which they shall retain for the next year. The year, your boat's name and your corrected time shall be listed on the trophy for posterity.

### 7. SAFETY

**No provisions are made for vessel safety by BAMA** (see limitation of liability below).

### 8. DISCLAIMER OF LIABILITY

Competitors participate in the regatta **entirely at their own risk**. See RRS rule 3, "Decision to Race". The organizing authority will not accept any liability for material damage, personal injury or death sustained in conjunction with, prior to, during, or after the regatta.